

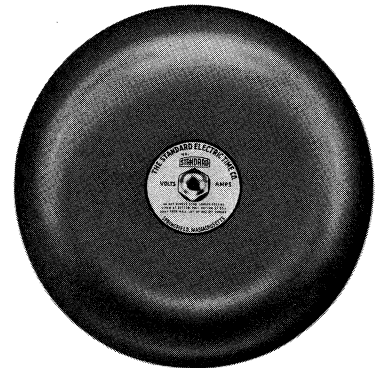


**STANDARD ELECTRIC TIME CORP.** DIVISION OF JOHNSON SERVICE COMPANY  
89 LOGAN STREET • SPRINGFIELD, MASSACHUSETTS 01101

## ALARM BELLS

**6" and 10" Single Stroke, A-C and D-C  
Listed By Underwriters' Laboratories, Inc.**

This data lists standard 6" and 10" alarm bells for installation in march time or coded fire alarm systems. General application is 6" bells for classrooms, corridors and small industrial or commercial establishments. The larger 10" bells are recommended for boiler rooms, gymnasiums, auditoriums and heavy industrial or large commercial areas. Bells are available with or without a protective, heavy cast aluminum bell guard. The bells are selected from the catalog table based on circuit type, circuit voltage and size.



10" BELL

### CONSTRUCTION - INSTALLATION

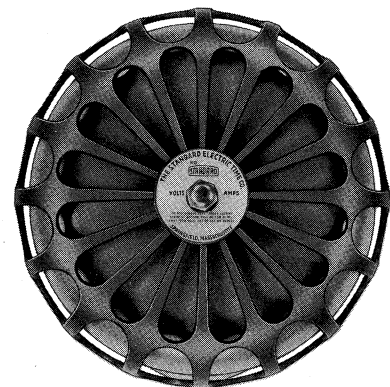
The mechanisms contain a solenoid, single stroke action. Each assembly is constructed of steel. An adapter plate is furnished with each bell. This permits semi-flush installation on a 3-1/4" or 4" octagon outlet box, or a 4" square box. A 4" square box is recommended for surface mounting. (Boxes furnished by installing contractor). The catalog listing also includes a flush enclosure and matching grille for recessed installations.



6" BELL

The mechanism and housing includes a plug-in receptacle which press-fits to the back-plate. The housing is simultaneously hung on the back-plate tabs and plugged into the receptacle. The bell assembly is secured by a single bottom screw. (See illustration)

The back-plate is cadmium plated. The gong and housing are finished in a grey lacquer. Fire alarm red is optional on the gong. Specify on the order. The shipping weight of 6" bells is 5 lbs. and 6 lbs. and 10" bells, 9 lbs. and 11 lbs. without and with guards.

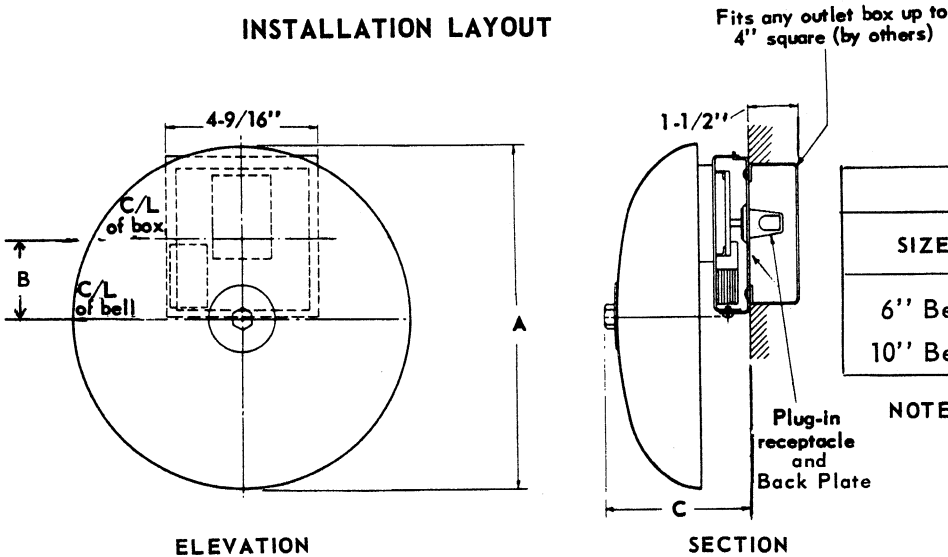


10" BELL WITH GUARD

**CATALOG TABLE**

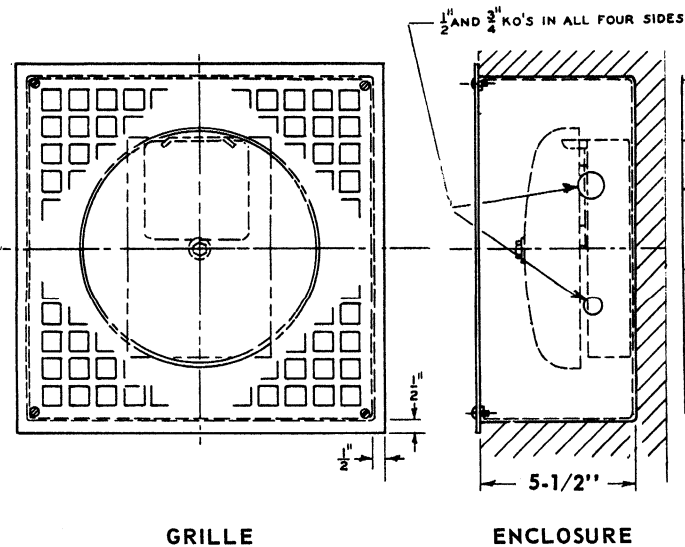
DESCRIPTION	CURRENT/VOLTAGE Type Circuit	CATALOG NO.	DESCRIPTION	CURRENT/VOLTAGE Type Circuit	CATALOG NO.
6" Bell	2.26 Amp., 12V a-c, Series	200-344	10" Bell	0.23 Amp., 120V a-c	200-345
6" Bell W/Guard	2.26 Amp., 12V a-c, Series	200-349	10" Bell W/Guard	0.23 Amp., 120V a-c	200-355
10" Bell	2.26 Amp., 12V a-c, Series	200-354	6" Bell	1.50 Amp., 4V d-c, Series	200-348
10" Bell W/Guard	2.26 Amp., 12V a-c, Series	200-352	6" Bell W/Guard	1.50 Amp., 4V d-c, Series	200-351
6" Bell	0.88 Amp., 24V a-c	200-360	10" Bell	1.50 Amp. 4V d-c, Series	200-362
6" Bell W/Guard	0.88 Amp., 24V a-c	200-346	10" Bell W/Guard	1.50 Amp. 4V d-c, Series	200-347
10" Bell	0.88 Amp., 24V a-c	200-357	6" Bell	0.38 Amp., 24V d-c	200-359
10" Bell W/Guard	0.88 Amp., 24V a-c	200-363	6" Bell W/Guard	0.38 Amp., 24V d-c	200-356
6" Bell	0.23 Amp., 120V a-c	200-353	10" Bell	0.38 Amp., 24V d-c	200-358
6" Bell W/Guard	0.23 Amp., 120V a-c	200-361	10" Bell W/Guard	0.38 Amp., 24V d-c	200-350

**INSTALLATION LAYOUT**



DIMENSIONS			
SIZE	A	B	C
6" Bell	6"	1/2"	3-5/8"
10" Bell	10"	2-1/2"	4"

NOTE: Center of wall box must be at least 6" below ceiling level.



FLUSH ENCLOSURES - GRILLES		
ITEM	DIMENSIONS	CATALOG NO.
6" Bell Encl.	9" Square	100-254
Grille	10" Square	100-257
10" Bell Encl.	13 1/4" Square	100-255
Grille	14 1/4" Square	100-258

Material, Steel, aluminized finish.  
Both Enclosures are 5 1/2" Deep.